

# AUGUST<sup>®</sup>

## User Manual

MS625



August International Ltd  
United Kingdom

Telephone: +44 (0)845 250 0586

[www.augustint.com](http://www.augustint.com)

- EN** Bluetooth<sup>®</sup> Speaker Set
- FR** Ensemble d'Enceintes Bluetooth<sup>®</sup>
- DE** Bluetooth<sup>®</sup> Lautsprecher Set
- IT** Set di Altoparlanti Bluetooth<sup>®</sup>
- ES** Set de Altavoces Bluetooth<sup>®</sup>

# User Manual

Thank you for purchasing the August MS625 Bluetooth Speaker Set. This user manual is designed to familiarize you with all the features of this device. Please take the time to read this user manual carefully, even if you are already familiar with a similar product.

## Safety

To ensure the safety of you and others, please read the Safety Instructions before using this device. Please do not disassemble this product, it can be unsafe and will invalidate the manufacturer's warranty.

## Disposal

Please ensure the product and accessories are disposed of in compliance with the WEEE (Waste Electrical and Electronic Equipment) Directive and any other regulations applicable to your country. Always check with the environment agency and any other relevant authorities for current disposal regulations.

## Declaration of Conformity

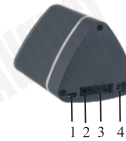
The Declaration of Conformity can be found on our website at <http://augustint.com/en/declaration/>

## Customer Service

You can contact us by phone on: +44 (0)845 250 0586 or by email at: [service@augustint.com](mailto:service@augustint.com) should you require further technical support or customer service.

# Quick Start Guide MS625

Main (Left)



Secondary (Right)



1. USB Charging Port
2. Audio in Socket
3. Multifunction Switch
4. Power Switch

**Note:** Before first use, please ensure that both speakers are fully charged. To charge, use the power cable to connect both speakers to a powered USB port. Whilst charging, the LED lights red and turns off once fully charged.

Both speakers need to be paired to each other prior to pairing to a source device.


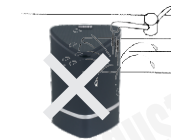




1. Switch the secondary speaker on first.
2. Then switch the main speaker on. Once paired together, the speakers will say "Bluetooth" and status LEDs will light blue constantly.
3. To pair a source device, press and hold the multi-function switch on the main speaker to enter pairing mode. In pairing mode the status LED will flash blue.
4. Pair your source device with 'MS625' using its Bluetooth settings. If you are unfamiliar with the Bluetooth feature of your source device, refer to its user manual for detailed instructions.
5. Once successfully paired, the MS625 will say "Bluetooth" and the status LEDs will light blue constantly.

# Contents

1. Safety Instructions.....	4
2. Main Features.....	5
3. Box Contents.....	5
4. Part Names and Functions.....	5
5. Operation.....	6
5.1 Switch Speakers On/Off.....	6
5.2 Bluetooth Connection.....	6
5.3 Volume and Track Control.....	8
5.4 Audio In Mode.....	8
6. Charging.....	9
7. Specification.....	9
8. Troubleshooting.....	10
9. Warranty.....	11

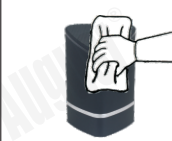
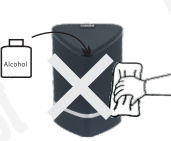
## 1. Safety Instructions

### ■ Storage and Use

	<p>Do not store or use this device in extreme temperatures.</p>		<p>Do not store or use this device in wet or damp environments.</p>
	<p>Do not expose this device to dust, oil or smoke.</p>		<p>Do not drop or strike this device.</p>
	<p>When transporting this device store securely to avoid impact damage.</p>		<p>Do not scratch this device with sharp objects.</p>

### ■ Maintenance

Please unplug all leads before cleaning this device.

	<p>Wipe the device and buttons with a soft cloth.</p>		<p>Never wipe this device with an abrasive cloth or apply detergent, alcohol or chemical based cleaning products.</p>
---	---	---	---

## 2. Main Features

- Wireless Audio from any Bluetooth Device
- Low Latency Speakers for Stereo Sound on Your Home TV
- Bluetooth Speaker to Speaker Connection
- Audio-In Socket for Non Bluetooth Devices
- Long Life Built-in Rechargeable Batteries

## 3. Box Contents



Speaker Set

Power cable

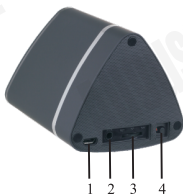
3.5mm audio cable

User manual

## 4. Part Names and Functions

Main (Left)

Secondary (Right)



1. USB Charging Port
2. Audio in Socket
3. Multifunction Switch
4. Power Switch

## 5. Operations

### 5.1 Switch Speakers On/Off

The power switch for both the main and secondary speaker is a slider switch located on the rear of each unit.

### 5.2 Bluetooth Connection

Before first use, please ensure that both speakers are fully charged. To charge, use the provided USB charging cable to connect both speakers to a powered USB port. Whilst charging, the LED lights red and turns off once fully charged.

Both speakers need to be paired to each other prior to pairing to a source device.

1. Switch the secondary speaker on first.
2. Then switch the main speaker on. Once paired together, the speakers will say "Bluetooth" and status LEDs will light blue constantly.

**Note:** After the speakers have paired with each other, the MS625 will enter reconnection mode and will connect automatically to a previous known device.

If two previously paired source devices are enabled within range and only the main speaker is on, the main speaker will be connected to those two source devices and this will prevent it pairing to the secondary speaker.

3. To pair to a new source device, press and hold the multi-function switch on the main speaker to enter pairing mode. In pairing mode the status LED will flash blue.

#### ■ For mobile phones

- 1) Scan for available Bluetooth devices on your mobile phone (see your mobile phone user manual for instructions if needed).
- 2) Select "MS625" from the available devices.
- 3) Once successfully paired and connected, the status LED will light constant blue.

**Note:** Accessing Bluetooth settings on mobile phones varies for each phone. To find the information for your phone, please refer to its user manual.

### ■ For computers

- 1) Enable the Bluetooth function on your computer.
- 2) Select “Devices and Printers” from the Control Panel and click “Add a Device”.
- 3) Select “MS625” from the available devices, the system will install the driver automatically.
- 4) Once successfully paired and connected, the status LED will light constant blue.

### ■ For a TV or Set-Top Box with Integrated Bluetooth Connection

- 1) Scan for available Bluetooth devices on your TV or Set-Top Box (see your TV or Set-Top Box user manual for instructions if needed).
- 2) Select “MS625” from available devices.
- 3) Once successfully paired and connected, the status LED will light constant blue.

### ■ For TV with No Bluetooth Connection

To connect to a TV or Set-Top box without a Bluetooth connection, you will require a Bluetooth Transmitter such as the August MR250.

- 1) Plug the transmitter into the headphone socket of your TV.
- 2) Switch the transmitter on and enter pairing mode (for more information, please refer to the transmitter user manual). Please ensure that no other Bluetooth device is available for pairing nearby.
- 3) The transmitter will automatically pair with the MS625. Once successfully paired and connected, the status LED will light constant blue.

**Note:** the compatibility of third party transmitters with the MS625 cannot be guaranteed.

## 5.3 Volume and Track Control

### 5.3.1 Volume Control

To adjust the volume either slide and hold the multifunction switch to the left or right or adjust the volume on your source device.

### 5.3.2 Track Control

To control the track slide the multifunction switch to the left or right to skip or repeat track. Press the multifunction switch to play or pause playback.

**Note:** Volume and track control require A2DP on your source device, please refer to its user manual to see if it has A2DP.

## 5.4 Audio In Mode

To use the MS625 with a non-Bluetooth source device, connect the source device to the main speaker audio in socket using the provided 3.5mm audio cable. Once connected the LED on the main speaker will light red.

**Note:** If the MS625 is paired to a Bluetooth device, please stop or pause the playback on that device before using audio in.

## 6. Charging

To charge the MS625, connect the micro USB lead to the device power sockets, and the other end of the power cable to a powered USB port. The LED lights red whilst charging and turns off once the battery is fully charged.

## 7. Specification

Bluetooth Specification	Bluetooth v4.2, APTX, APTX-LL
Bluetooth Profile	A2DP, AVRCP
Operating Range	Up to 10m (Class 2)
Operating Range between speakers	Up to 5m
Frequency Response	90Hz – 20KHz
Speaker Output	5W x 2
SNR	≥80dB
Distortion	≤1.0% at 1kHz
Battery	3.7V/1600mAh Built-in Lithium Battery
Working Time	About 15 hours
Charging Time	About 5 hours
Standby Time	30 Days
Weight of each speaker	260g
Dimensions	106.5 x 74 x 69.4mm

Qualcomm® aptX™ audio is a product of Qualcomm Technologies International, Ltd.

Qualcomm is a trademark of Qualcomm Incorporated, registered in the United States, and other countries, used with permission. aptX is a trademark of Qualcomm Technologies International, Ltd.

## 8. Troubleshooting

Problem	Solution
Speakers will not switch on	Please charge the MS625
MS625 not found by source device	Confirm the MS625 is in pairing status and within 10 meters from the device.
Windows does not install the MS625 driver	Update the driver of the Bluetooth module on your computer
Intermittent sound quality in Bluetooth mode	Disable other Bluetooth devices in the area and/or switch off WiFi on your source device.
No Sound	Check the volume on both source device and MS625
Can not connect to Bluetooth on Windows XP or Vista	Third party software may be required, please contact the manufacturer of your Bluetooth chip for more information
Can not connect to Bluetooth on Windows 7+	Download all updates for Windows and your Bluetooth driver, these may need to be manually downloaded from the Bluetooth chips manufacturers website
The main and secondary speakers cannot be paired.	Turn off both speakers and the Bluetooth on the source devices. Turn on the secondary speaker first then turn on the main speaker.
The source device cannot pair to the main speaker.	Disable other source devices then select the 'MS625' from Bluetooth list on the wanted device. Press and hold the multi-function switch on the main speaker to enter pairing mode.

## 9. Warranty

This product is guaranteed for twelve months from the date of the original purchase. In the unlikely event of any defect arising due to faulty materials or workmanship, the unit will be either replaced or repaired free of charge (where possible) during this period. An alternative product will be offered in case the product is no longer available or repairable.

### This warranty is subject to the following conditions:

- The warranty is only valid within the country where the product is purchased.
- The product must be correctly installed and operated in accordance to the instructions given in this user manual.
- The product must be used solely for domestic purposes.
- The warranty only covers the main units, and does not cover the accessories.
- The warranty does not cover the damage caused by misuse, negligence, accident and natural disaster.
- The warranty will be rendered invalid if the product is resold or has been damaged by inexpert repairs. The manufactures disclaim any liability for incidental or consequential damages.
- Please consult our customer adviser before returning any product; we are not responsible for any unexpected product returns.
- Any faulty product must be kept and returned in the original packaging with all the accessories and the original copy of the purchase receipt.

The warranty is in addition to, and does not diminish, your statutory or legal rights.

### Customer Service:

Telephone: +44 (0) 845 250 0586

Email: [service@augustint.com](mailto:service@augustint.com)

This product is in compliance with the essential requirements and other relevant provisions of Directive 2004/108/EC. The Declaration of conformity may be consulted online at <http://www.augustint.com/en/declaration>.



### Industry Canada Statement

This device complies with Industry Canada license-exempt RSS standard(s). Operation is subject to the following two conditions: (1) this device may not cause interference, and (2) this device must accept interference, including interference that may cause undesired operation of the device.

Note: This equipment has been tested and found to comply with the limits for a Class B digital device, pursuant to part 15 of the FCC Rules. These limits are designed to provide reasonable protection against harmful interference in a residential installation. This equipment generates uses and can radiate radio frequency energy and, if not installed and used in accordance with the instructions, may cause harmful interference to radio communications. However, there is no guarantee that interference will not occur in a particular installation. If this equipment does cause harmful interference to radio or television reception, which can be determined by turning the equipment off and on, the user is encouraged to try to correct the interference by one or more of the following measures:

- Reorient or relocate the receiving antenna.
- Increase the separation between the equipment and receiver.
- Connect the equipment into an outlet on a circuit different from that to which the receiver is connected.
- Consult the dealer or an experienced radio/TV technician for help.

No Unauthorized Modifications: Do not make any changes or modifications to this product without the prior express written approval of August International Ltd. Any changes or modifications made without express written approval could void the user's authority to operate this product.



For details of further relevant technical standards, please contact us at the address above.