

August[®]

User Manual

EPG500



August International Ltd
Rawmec Business Park
Hoddesdon EN11 0EE
United Kingdom
Tel: +44(0) 845 250 0586

Bayernstr. 10, D-30855
Langenhagen
Germany
Tel: +49(0) 511 97812978

www.augustint.com

EN TWS Gaming Earbuds

FR Écouteurs Bluetooth TWS Gaming

DE TWS Gaming Earbuds

IT Auricolari Bluetooth TWS Gaming

ES Auriculares Inalámbricos Gaming

PL Słuchawki gamingowe douszne TWS

RU Беспроводные наушники для видеоигр

User Manual

Thank you for purchasing the August EPG500 TWS Gaming Earbuds. This user manual is designed to familiarize you with all the features of this device. Please take the time to read this user manual carefully, even if you are already familiar with a similar product.

Safety

To ensure the safety of you and others, please read the Safety Instructions before using this device. Please do not disassemble the EPG500, it can be unsafe and will invalidate the manufacturer's warranty.

Disposal

Please ensure the product and accessories are disposed of in compliance with the WEEE (Waste Electrical and Electronic Equipment) Directive and any other regulations applicable to your country. Always check with the environment agency and any other relevant authorities for current disposal regulations.

Declaration of Conformity


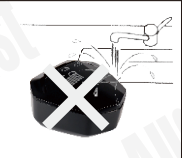


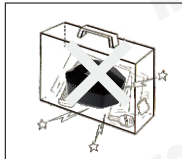
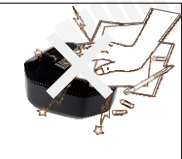
The Declaration of Conformity can be found on our website at <http://augustint.com/en/declaration/>

Customer Service

You can contact us by phone on: +44 (0)845 250 0586 or by email at: service@augustint.com should you require further technical support or customer service.

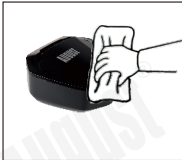
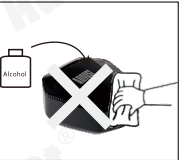
1. Safety Instructions

■ Storage and Use

	Do not store or use this device in extreme temperatures.		Do not store or use this device in wet or damp environments.
	Do not expose this device to dust, oil or smoke.		Do not drop or strike this device.
	When transporting this device store securely to avoid impact damage.		Do not scratch this device with sharp objects.

■ Maintenance

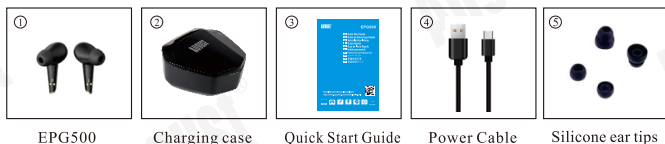
Please unplug all leads before cleaning this device.

	Wipe the device and buttons with a soft cloth.		Never wipe this device with an abrasive cloth or apply detergent, alcohol or chemical based cleaning products.
---	--	--	--

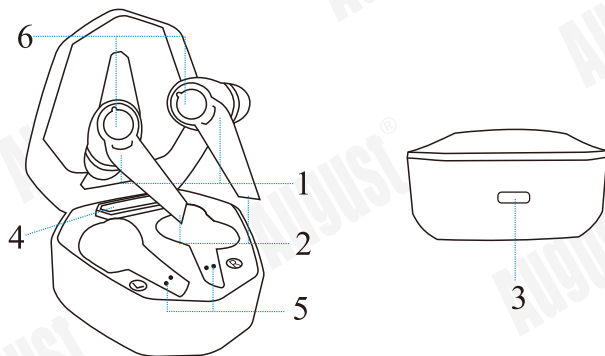
2. Main Features

- Gaming mode, Low Latency & Bluetooth 5
- Dual microphone for clear sound production
- Noise Cancelling with deep bass range
- USB-C charging case with 40 hours of battery life
- Lightweight and comfortable

3. Box Contents



4. Part Names and Functions



- 1 Multifunction Touch Area (Power/Play/Pause/Answer Call)
- 2 Microphone
- 3 Power Socket
- 4 Battery Indicator
- 5 Pogo Pins
- 6 Status LED

Indication	LED Status
Power On	Both LEDs will flash pink
Power Off	Both LEDs will flash blue and then turn off
Pairing	Both LEDs will flash blue and red
Paired	Both LED light turn off
Repairing	Both LED light flash blue once per second
Low Battery	Both LED light flash blue twice per 2 minutes

5. Operation

5.1 First Use

Take out both earbuds and remove the protector from charging pogo pins, then place them back into the case to activate. Charge both earbuds fully before first use (for details, please refer 5.2 Charging)

If the earbuds have not charged, then please charge the charging case. The earbuds will automatically pair with each other and enter connection mode after powering on. The left earbud will flash blue and red when in pairing mode.

5.2 Charging

Please fully charge the EPG500 before first use or if left unused for a long period of time.

To charge earbuds, put earbuds into the charging case. While charging, two status LED lights blue and turns off once fully charged.

To charge the charging case, plug the Type-C charging cable to the battery case port to. The battery indicator will display current charging progress.

5.3 Switch On / Off

Both earbuds will turn on automatically when the charging case is opened or when the Multi-function Button has been pressed for 3seconds. Both LED lights turn on pink for 1 second, then slow flash once per 1 second.

Both earbuds will turn off automatically when placed back into the charging case and the charging case is closed or when the Multi-function Button has been pressed for 5 seconds. Both LEDs will turn on blue and then off.

5.4 Bluetooth Connections

The EPG500 will enter reconnection mode when powered on. When connected to a previously paired device, the EPG500 will automatically reconnect. For first connection, please refer '5.1 First use'. To pair to a new device, insert earbuds back into the charging case, then disconnect the EPG500 from your old device. Both status LEDs will flash slowly.

-Twin earbuds pairing

Open the cover of charging case or take the both earbuds out of the charging case. The earbuds will automatically pair with each other. The earbuds will enter Bluetooth pairing mode automatically. Both LEDs will flash slowly.

-Single earbud pairing

When using a single earbud, take one earbud out of the charging case and close the case, Press the Multifunction button for 3 seconds to turn on an earbud. The status LED will flash pink. Then, the earbud will automatically enter into pairing mode, the LED will flash slowly. Look for the Bluetooth name 'EPG500' on your device. Select it and complete pairing with a single earbud.

6. Operations

6.1 Music

Button	Action	Function
Right /Left	Click twice	Play / Pause Music
Right	Press and hold for 2 seconds	Next Track
Left	Press and hold for 2 seconds	Previous Track
Right	Click once	Increase Volume
Left	Click once	Decrease Volume
Right	Click three times	Game Mode/ Music Mode

6.2 Call

Button	Action	Function
Right /Left	Click Twice	End call
Right /Left	Press and hold for 2 seconds	Reject Call
Left	Click three times	Active Voice Assistance

7. Specification

Bluetooth Version	v5.0
Chipset	Pixart1606
Support profiles	A2DP/HFP/HSP/AVRCP
Frequency	2.4 GHz-2.48 GHz
Transmission distance	10 meters
Driver units	10mm
Impedance	16 ohms
Frequency response	20Hz~20KHz
Battery capacity	60mAh*2
Charging case capacity	500mAh
Earbud Play time	10 hours
Charge port	Type C
Charging time	1-2 hours
Earbuds Weight	4.5g
Earbuds size	39.7x 26.7x 24.4 mm
Charging case size	64x 62.4 x 33.9 mm

8.Warranty

This product is guaranteed for twelve months from the date of the original purchase. In the unlikely event of any defect arising due to faulty materials or workmanship, the unit will be either replaced or repaired free of charge (where possible) during this period. An alternative product will be offered in case the product is no longer available or repairable.

This warranty is subject to the following conditions:

- The warranty is only valid within the country where the product is purchased.
- The product must be correctly installed and operated in accordance to the instructions given in this user manual.
- The product must be used solely for domestic purposes.
- The warranty only covers the main unit, and does not cover the accessories.
- The warranty does not cover the damage caused by misuse, negligence, accident and natural disaster.
- The warranty will be rendered invalid if the product is resold or has been damaged by inexpert repairs. The manufactures disclaim any liability for incidental or consequential damages.
- Please consult our customer adviser before returning any product; we are not responsible for any unexpected product returns.
- Any faulty product must be kept and returned in the original packaging with all the accessories and the original copy of the purchase receipt.

The warranty is in addition to, and does not diminish, your statutory or legal rights.

Customer Service:

Telephone: +44 (0) 845 250 0586

Email: service@augustint.com

This product is in compliance with the essential requirements and other relevant provisions of Directive 2014/53/EU. The Declaration of conformity may be consulted online at <http://www.augustint.com/en/declaration>



Industry Canada Statement

This device complies with Industry Canada license-exempt RSS standard(s). Operation is subject to the following two conditions: (1) this device may not cause interference, and (2) this device must accept interference, including interference that may cause undesired operation of the device.

Note: This equipment has been tested and found to comply with the limits for a Class B digital device, pursuant to part 15 of the FCC Rules. These limits are designed to provide reasonable protection against harmful interference in a residential installation. This equipment generates uses and can radiate radio frequency energy and, if not installed and used in accordance with the instructions, may cause harmful interference to radio communications. However, there is no guarantee that interference will not occur in a particular installation. If this equipment does cause harmful interference to radio or television reception, which can be determined by turning the equipment off and on, the user is encouraged to try to correct the interference by one or more of the following measures:

- Reorient or relocate the receiving antenna.
- Increase the separation between the equipment and receiver.
- Connect the equipment into an outlet on a circuit different from that to which the receiver is connected.
- Consult the dealer or an experienced radio/TV technician for help.

No Unauthorized Modifications: Do not make any changes or modifications to this product without the prior express written approval of August International Ltd. Any changes or modifications made without express written approval could void the user's authority to operate this product.



For details of further relevant technical standards, please contact us at the address above.